

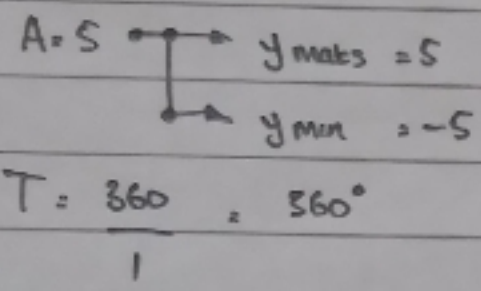
Nama : Reyhan Febry Pramodya

Kelas : X IPA 6

Tugas Fungsi Trigonometri:

1). Grafik fungsi dari $y = 5 \sin x$

Jawab:

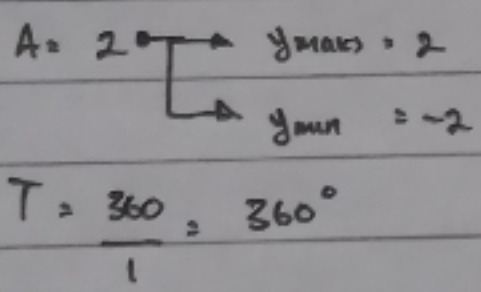


• koordinat $y = 5 \sin x$

x	0°	30°	60°	90°	120°	150°	180°	210°	240°	270°	300°	330°	360°
y	0	$\frac{5}{2}$	$\frac{5\sqrt{3}}{2}$	5	$\frac{5\sqrt{3}}{2}$	$\frac{5}{2}$	0	$-\frac{5}{2}$	$-\frac{5\sqrt{3}}{2}$	-5	$-\frac{5\sqrt{3}}{2}$	$-\frac{5}{2}$	0

2). Grafik fungsi dari $y = 2 \cos x$

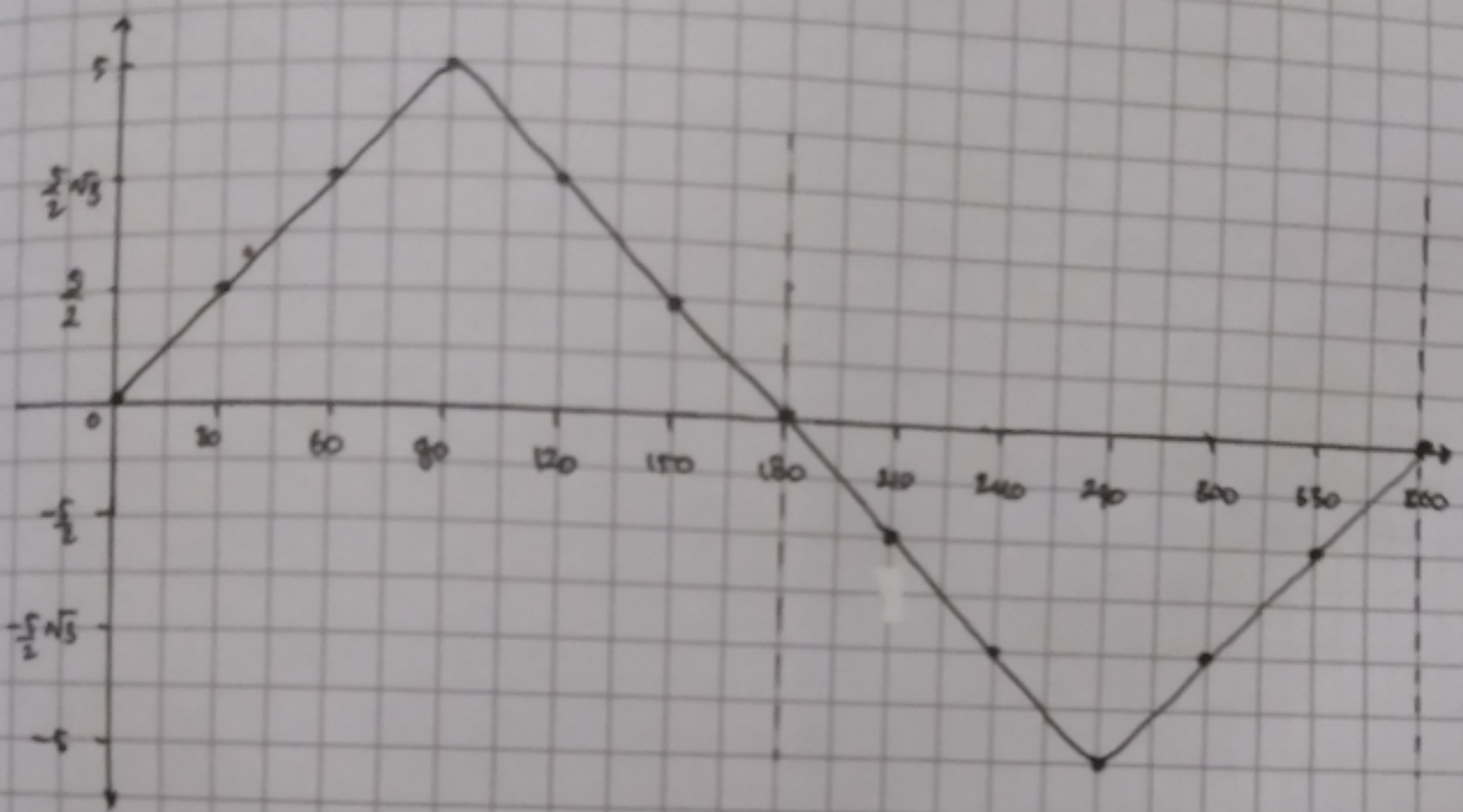
Jawab:



• koordinat $y = 2 \cos x$

x	0	30	60	90	120	150	180	210	240	270	300	330	360
y	2	$\sqrt{3}$	1	0	-1	$-\sqrt{3}$	-2	$-\sqrt{3}$	-1	0	1	$\sqrt{3}$	2

0. Grafik fungsi dari $y = 5 \sin x$



2). Grafik fungsi $y = 2 \cos x$

